

**CHC MERCHANDISE COMMITTEE**  
**Spring/Summer 2011 Collection**  
Denise Tobiasz (440-777-0545)

The Cleveland Hiking Club is proud to offer a line of quality merchandise to its members. **Note:** We will only be ordering quantities from our supplier as is ordered by our members. Merchandise is distributed on hikes.

The Spring/Summer 2010 Collection features the items shown below:

**Short sleeve 50/50 polyester-cotton blend T-Shirt in**

- **White,**
- **Heather,**
- **Ash,**
- **Oxford,**
- **Island Yellow,**
- **Gold,**
- **Yellow Haze,**
- **Chocolate,**
- **Red,**
- **Maroon,**
- **Pink,**
- **Deep Purple,**
- **Jade,**
- **California Blue,**
- **Columbia Blue,**
- **Royal,**
- **Navy,**
- **Safety Green,**
- **Kelly, Forrest,**
- **Green Black.**

**YOUTH 50/50 COTTON/POLY T-SHIRT**  
 YOUTH SIZES: XS(2-4), S(6-8), M(10-12), L(14-16), XL(18-20)  
**29B Call for pricing**

Ⓨ Colors also available in Youth

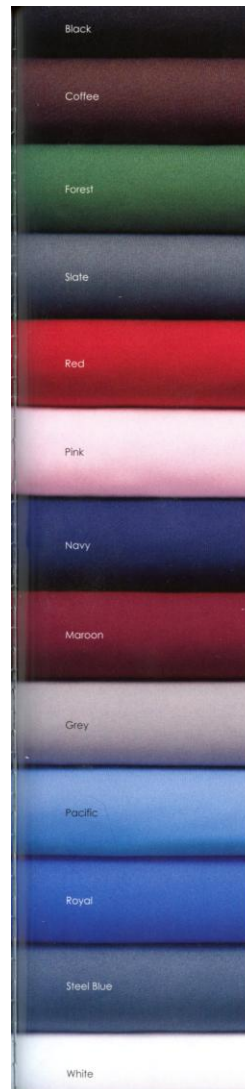
		Colors		Colors	
			NEW! Chocolate		Colors
			True Red (5XL) Ⓨ	NEW! Columbia Blue	
			Maroon Ⓨ	NEW! Royal (4XL) Ⓨ	
			NEW! Classic Pink Ⓨ	True Navy (5XL) Ⓨ	
White		Island Yellow Ⓨ	Cyber Pink Ⓨ	Safety Green Ⓨ	
White (5XL) Ⓨ		Gold Ⓨ	Deep Purple Ⓨ	Kelly Ⓨ	
		Yellow Haze	Jade	Forest Green Ⓨ	
Heathers		Burnt Orange Ⓨ	California Blue Ⓨ	Black (5XL) Ⓨ	
Ash** (5XL) Ⓨ (formerly Birch)		NEW! Khaki			
Oxford (5XL) Ⓨ					

The T-shirt will have the small CHC Hiker Logo silk-screened on the left front chest area. On the back of the T-shirt will have the large Hiking Club logo silk-screened. You can order t-shirt with the CHC logo on front only (\$8.00) or with it on the front and back (\$9.00).

**New: Men's Short Sleeve Alo performance t-shirt in:**

- **Black,**
- **Coffee,**
- **Forrest,**
- **Slate,**
- **Red,**
- **Navy,**
- **Maroon,**
- **Grey,**
- **Pacific,**
- **Royal,**
- **Steel Blue,**
- **White.**

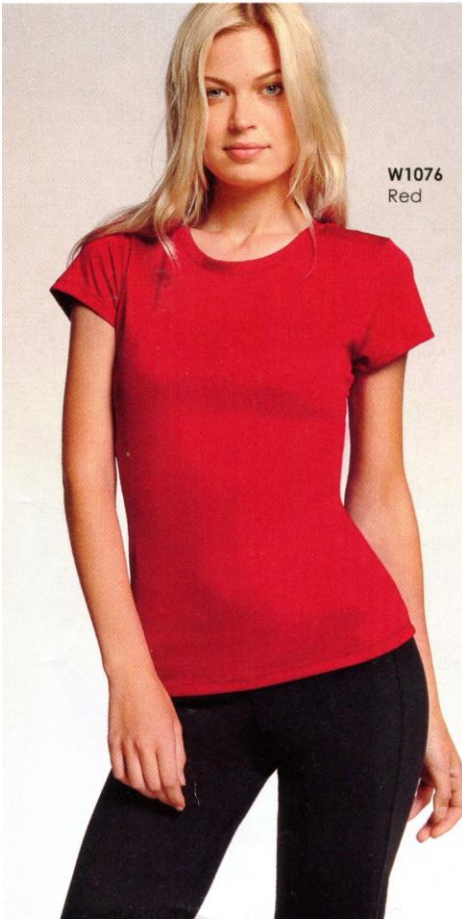
Made of 100% polyester knit interlock .T-shirt has dry wicking and antimicrobial capabilities. Silk screened on front with CHC logo (\$22.00) or front and back (\$23.00).



**New: Ladies Short Sleeve Alo  
performance t-shirt in:**

- **Black,**
- **Red,**
- **Pink,**
- **Navy,**
- **Grey,**
- **White.**

100% polyester knit interlock. T-shirt has dry wicking and antimicrobial capabilities. Silk screened on front with CHC logo (\$22.00) or front and back (\$23.00).



**New: Men's Long Sleeve Color block Alo performance t-shirt in**

- **Solid Black,**
- **Black/slate,**
- **Coffee/slate,**
- **Grey/black,**
- **Grey//white,**
- **Leaf/slate,**
- **Navy/grey,**
- **Red/slate,**
- **Royal/navy,**
- **Slate/orange,**
- **White/slate.**

100% polyester Birdseye knit jacquard. Contrast panel at side seam and overstitch at shoulder, armhole, sleeve cuff and bottom hem. T- Shirt has dry wicking and antimicrobial capabilities. Silk screened on front with the CHC logo (\$32.50) or front and back (\$33.50).



**New: Ladies Long Sleeve Color block Crew Alo performance t-shirt in Solid Black, Black/grey, Leaf/slate, Navy/sea green, Pacific/navy, White/black, White/mint.**

100% polyester  
Birdseye knit jacquard. Contrast panel at side seam and overstretch at shoulder, armhole, sleeve cuff and hem. T-shirt has wicking and antimicrobial capabilities. Silk screened on front with the CHC logo (\$30.50) or front and back (\$31.50).

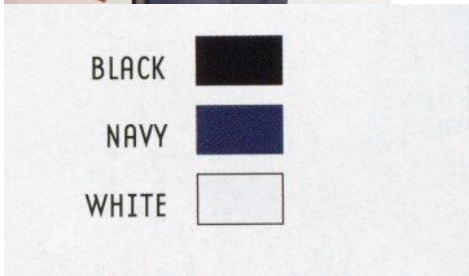
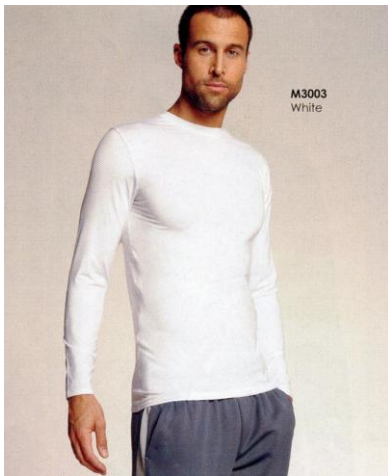


BLACK SOLID	
BLACK<GREY	
LEAF<SLATE	
NAVY<SEA GREEN	
PACIFIC<NAVY	
WHITE<BLACK	
WHITE<MINT	

---

**New: Alo Men's Long Sleeve  
Compression performance Tee  
in Black, Navy, White.** 83%

Polyester/17% Spandex Jersey. T-shirt has wicking and antimicrobial, and stretch flex provides comfort and freedom of movement. This compression Tee is snug fitting and used as a base layer. Silk screened on front with CHC logo(\$24.50 or front and back (\$25.50))



**Baseball Cap-Dry-Zone** (55/45 polyester/polypropylene double-knit) Velcro adjustable strap. Cap can be ordered in **Black, Olive, Red, Stone, Royal, Kelly Navy or White** and is embroidered with the CHC logo (\$13 50).

**Cotton Visor** with adjustable Velcro strap embroidered with the CHC logo in **Khaki, Mustard, Navy, Black, White, Carolina Blue.**(\$10.50)

**Windbreaker Jacket (unlined)**  
**100% Nylon** with acrylic coating a full length zip. Zipped side pockets and a draw string at hem. And a concealed hood with tear release fastening. Silk screened with the CHC logo in the front. Can be ordered in **Royal Blue, Forrest Green and Navy, Red, Black.** (\$25.50)

If you would like to order the following merchandise, please fill out the form below.

Orders must be received by **April 24th**. This will ensure delivery by **Mid May**.

Please make your check payable to:  
**The Cleveland Hiking Club.**  
Mail this order form and your check to:

Denise Tobiasz, 26263 Kennedy Ridge Road, North Olmsted, Ohio 44070

Ordered Merchandise will be distributed on East and West Hikes by mid June.